

our reputation is stainless

When we say, "Our reputation is stainless," we mean it. Crown Verity prides itself on its functional, durable and portable commercial grills. We believe that we've developed some of the finest professional grills on the market.

Crown Verity builds with only the finest quality materials. Stainless steel components throughout costs more. However, our charbroilers last virtually forever. Our bodies, legs, cooking grates, water pans, fasteners, lighter tubes are all high quality stainless steel for durability and ease of cleaning. All Crown Verity Inc. gas grills use # 304 series stainless steel cooking grates. Inferior grills use 400 series stainless steel, cast iron, chrome/nickel plated or porcelain coated grates, which rust.

All Crown Verity Inc. grills are shipped fully assembled on wooden skids. All you have to do is uncrate the grill, remove packing materials and you're ready to cook. No tools are required, as there is no assembly.

"If you love to cook - you'll love Crown Verity. Now you can use what professional chefs like me, use every day. The output and performance is truly incredible."

Murray Lloyd
Host of QScene TV

PLEASE NOTE: Crown Verity reserves the right to implement design changes where necessary. dimensions and specifications could vary.



mcb-30

Our new entry point for the homeowner who wants a professional set-up, or the light commercial griller. Professional stainless steel construction now more affordable. Smaller size, same quality.



Cooking Surface (W x D)	28.0 x 21.0"
Overall Dimension (W x D x H)	38.0 x 28.0 x 36.0"
Actual Weight (LBS)	127
Burners 4	BTUH 64,500
Options (SHOWN)	RD30 Roll Dome
	RES Removable End Shelf



mcb-36

For small caterers or restaurateurs, culinary teaching institutions, hotels, clubs or volume feeders the MCB 36 is a starting point. Can be customized from our accessory list, and most of our customers do. Five burners for maximum control and quick recovery.



Cooking Surface (W x D)	34.0 x 21.0"
Overall Dimension (W x D x H)	44.0 x 28.0 x 36.0"
Actual Weight (LBS)	143
Burners 5	BTUH 79,500
Options (SHOWN)	RD36/72 Roll Dome, End Shelf
	Sideburner (propane only)



mcb-48

For the busier operation, four feet of cooking surface, able to reach high pre-heat temperatures in 6-7 minutes. Ideal for golf clubs, caterers, clubs and the rental industry.



Cooking Surface (W x D)	46.0 x 21.0"
Overall Dimension (W x D x H)	56.0 x 28.0 x 36.0"
Actual Weight (LBS)	176
Burners 6	BTUH 99,000
Options (SHOWN)	RD48 Roll Dome
	RFS Removable Front Shelf



mcb-60

For the larger caterer, golf club and hotel. This grill can convert into a number of different cooking systems by adding one or more of our many versatile accessories.



Cooking Surface (W x D)	58.0 x 21.0"
Overall Dimension (W x D x H)	69.0 x 28.0 x 36.0"
Actual Weight (LBS)	215
Burners 8	BTUH 129,000
Options (SHOWN)	RD60 Roll Dome



mcb-72

This massive cooking surface is almost six feet long and two feet wide. That's more than ten square feet of cooking area to get you fired up for big meals. This model is very popular with volume feeders, resorts and country clubs.



Cooking Surface (W x D)	70.0 x 21.0"
Overall Dimension (W x D x H)	81.0 x 28.0 x 36.0"
Actual Weight (LBS)	253
Burners 10	BTUH 159,000
Options (SHOWN)	Two RD36 / RD72 Roll Domes
	RES Removable End Shelf, RT72 Rotisserie



tg-1

Our Tailgate fires up plenty of cooking area over six burners and keeps it's cool with insulated stainless steel wells for beverages or cold dishes. Hitch the Tailgate onto your vehicle and take your cooking skills anywhere there's a road or trail.



Cooking Surface (W x D)	46.0 x 21.0"
Overall Dimension (W x D x H)	70.0 x 124.0 x 52.0"
Actual Weight (LBS)	852
Burners 6	BTUH 99,000
Options (SHOWN)	Stanadard Features BI48, RD48, Stainless Steel Ice Chests
	Two 30 lb. propane tanks



cv-2650

Now with 34% more reflector surface area. Our new outdoor heaters are designed to extend the use of your patio, deck or dining area. Our heater uses a standard 20 or 30 lb. propane cylinder (not included). Also available in a collapsible model.



Height (INCHES)	90.0	BTUH (HOURLY)	45,000
Reflector Diameter (INCHES)	37.5		
Base Diameter (INCHES)	18.25		
Actual Weight (NOT INCLUDING CYLINDER)	75.0		
Circle Of Heat	Varies from 12 feet - 20 feet		
Note	Natural Gas model also available (cv-3050 ng)		

Warranty

All outdoor grill products carry a one-year parts and labour limited warranty (10 year warranty on stainless steel burner and stainless steel cooking grates). See dealer for full warranty details.

Standard Features

Crown Verity Inc. builds with only the finest quality materials. Stainless steel components throughout costs more. However, our charbroilers last virtually forever. Our bodies, legs, cooking grates, burners, undershelves, radiants, water pans, fasteners, lighter tubes are all high quality stainless steel for durability and ease of cleaning.

Accessories

Choose from our long list of accessories, including Roll-Domes, Front and End Shelves, Bun Racks, Rotisserie Packages, Perforated Grill Plates, Griddle Plates, Wind Guards, Steam Pan Adapters, Smoker Boxes, Side Burners and Covers.

CROWN VERITY INC.

37 Adams Boulevard
Brantford, Ontario, Canada N3S 7V8
tel **519.751.1800** or 888.505.7240
fax 519.751.1802
e-mail info@crownverity.com
web www.crownverity.com



Cooking Surface (W x D)	34.0 x 21.0"
Overall Dimension (W x D x H w/ table)	42.25 x 26.5 x 36.0"
Actual Weight (LBS)	107
BTUH	79,500

pcb-36

Our new stackable, portable gas grills and folding leg tables are ideal for catering and the rental industry. Available in 30, 36, 48 and 60" models.



ccb-60

Our new club grill incorporates two 30 lb. horizontal propane tanks making it perfect for use in the buffet line.



Cooking Surface (W x D)	58.0 x 21.0"
Overall Dimension (W x D x H)	69.0 x 28.0 x 36.0"
Actual Weight (LBS)	286
BTUH	129,000

Cooking Surface (W x D)	34.0 x 21.0"
Overall Dimension (W x D x H)	39.5 x 27.0 x 17.75"
Actual Weight (LBS)	163
BTUH	79,500

bi-36

The ultimate built-in grill for the outdoor cooking centre. Available in 30, 36 and 48" models, in both Natural Gas and Liquefied Propane. Optional RFS-36 and RD-36 shown.



cv-3 whs

Our high capacity electric steamer is designed for high volume stadiums, price clubs, universities, hospitals and contract feeders. Each unit comes complete with a custom pan package.

Steaming Wells (W x D)	Three 12.0 x 20.0"
Overall Dimension (W x D x H)	43.25 x 24.5 x 31.0"
Actual Weight (LBS)	190
Volts	240 Volts / 24 Amps

Cooking Surface (W x D)	58.0 x 21.0"
Overall Dimension (W x D x H)	69.0 x 28.0 x 36.0"
Actual Weight (LBS)	398
BTUH	129,000

mcc-60

Ideal for the large caterer, golf club or hotel. Includes everything you need in one complete package. Also available in a 72 inch model.



mg-60

Our new pro griddle cooks high volumes of product in a short period of time. Easily converts into a charbroiler for dual function use. Also available in 30", 36" 48", 72".

Cooking Surface (W x D)	56.0 x 21.0"
Overall Dimension (W x D x H)	69.0 x 28.0 x 43.5"
Actual Weight (LBS)	348
BTUH	129,000

Cooking Wells (W x D) (x1)	12.0 x 20.0"
Overall Dimension (W x D x H)	38.0 x 30.5 x 48.75"
Actual Weight (LBS)	190
BTUH (PER TANK)	90,000

pf-1

Our new pro fryer is designed to cook high volumes of product in a short period of time. This 35-40lb oil capacity single tank fryer is designed for outdoor use.



pf-2

Our dual tank fryer has a 35-40lb oil capacity per tank. Designed for larger outdoor events only. Optional accessories can include a Dump Station or Removable End Shelf.

Cooking Wells (W x D) (x2)	12.0 x 20.0"
Overall Dimension (W x D x H)	53.0 x 30.5 x 48.75"
Actual Weight (LBS)	301
BTUH (PER TANK)	90,000

Directional Heat (WATTS)	1,500	Actual Weight (LBS)	5
Overall Dimension (W x D x H)	21.5 x 4.0 x 5.0"		
Operating Cost (BASED ON \$.12 / KW)	18 cents / hour		

cv-eh-1500

Enjoy outdoor entertaining on cool nights under the stars! The infrared lamp only heats people and objects and does not waste energy heating the air. The Insta-Heat uses standard household electrical outlet making it portable and convenient. Designed for indoor or outdoor use.



bm-60

For charcoal grilling enthusiasts, this model includes removable legs. Our simple slide action grate adjusts the grilling surface to three heights for better cooking control.

Cooking Surface (W x D)	60.0 x 24.0"
Overall Dimension (W x D x H)	72.0 x 24.0 x 31.0"
Actual Weight (LBS)	127
Options (SHOWN)	None

Cooking Surface (W x D)	58.0 x 21.0"
Overall Dimension (W x D x H)	69.0 x 28.0 x 36.0"
Actual Weight (LBS)	220
BTUH	129,000

rcb-60

Our RCB series grill were designed specifically for the rental market, so that you can take the party on the road, to any location, designed with large scale events in mind. Also available in 48".



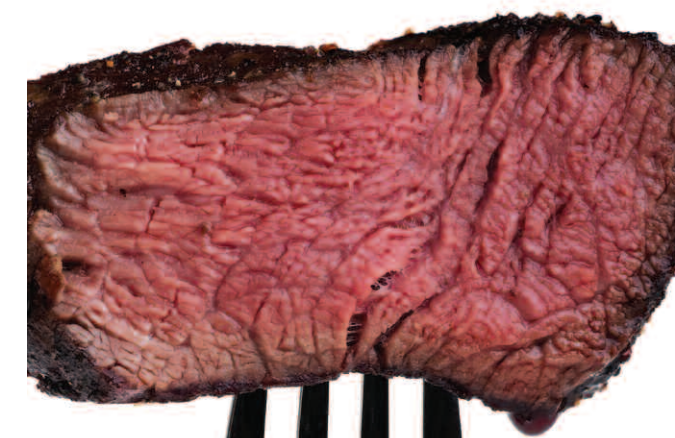
phs-1

For the large community outdoor function when handwashing is a must. Shipped complete with removable fresh and waste water tanks. Also available with 2 or 3 compartments.

Water Pump	120 Volt	Water Heater	120 Volt
Overall Dimension (W x D x H)	34.375 x 25.25 x 47.75"		
Actual Weight (LBS)	160	Compartments	1



grilled to perfection



Connect with Crown Verity. Find cooking tips, recipes, table plans and more!

See www.crownverity.com for details.

